



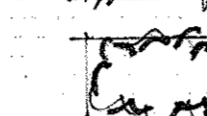

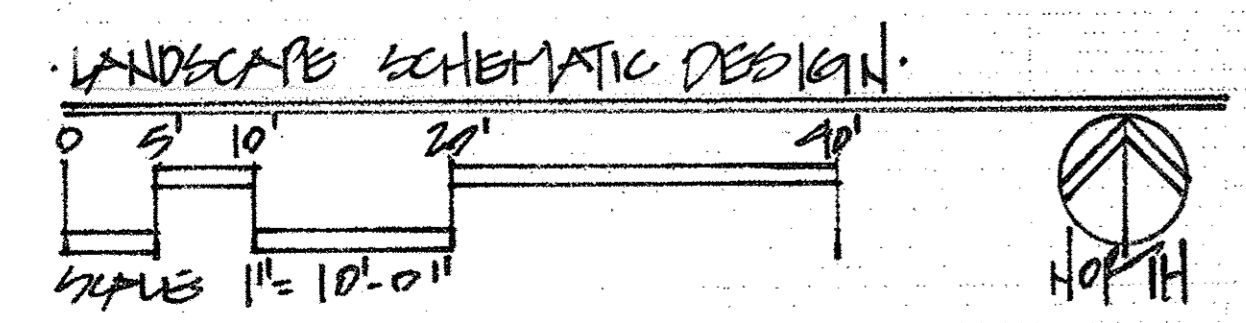
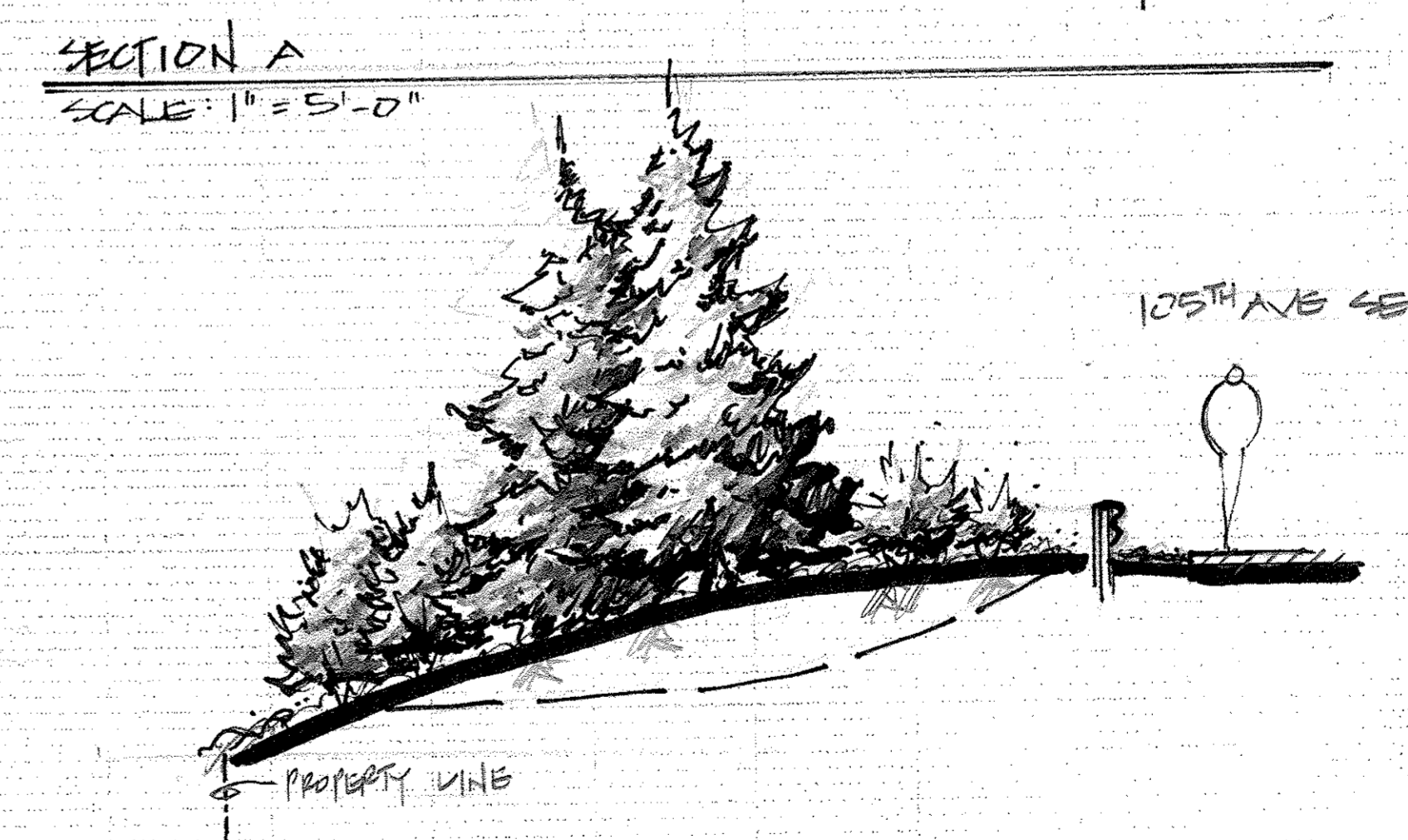
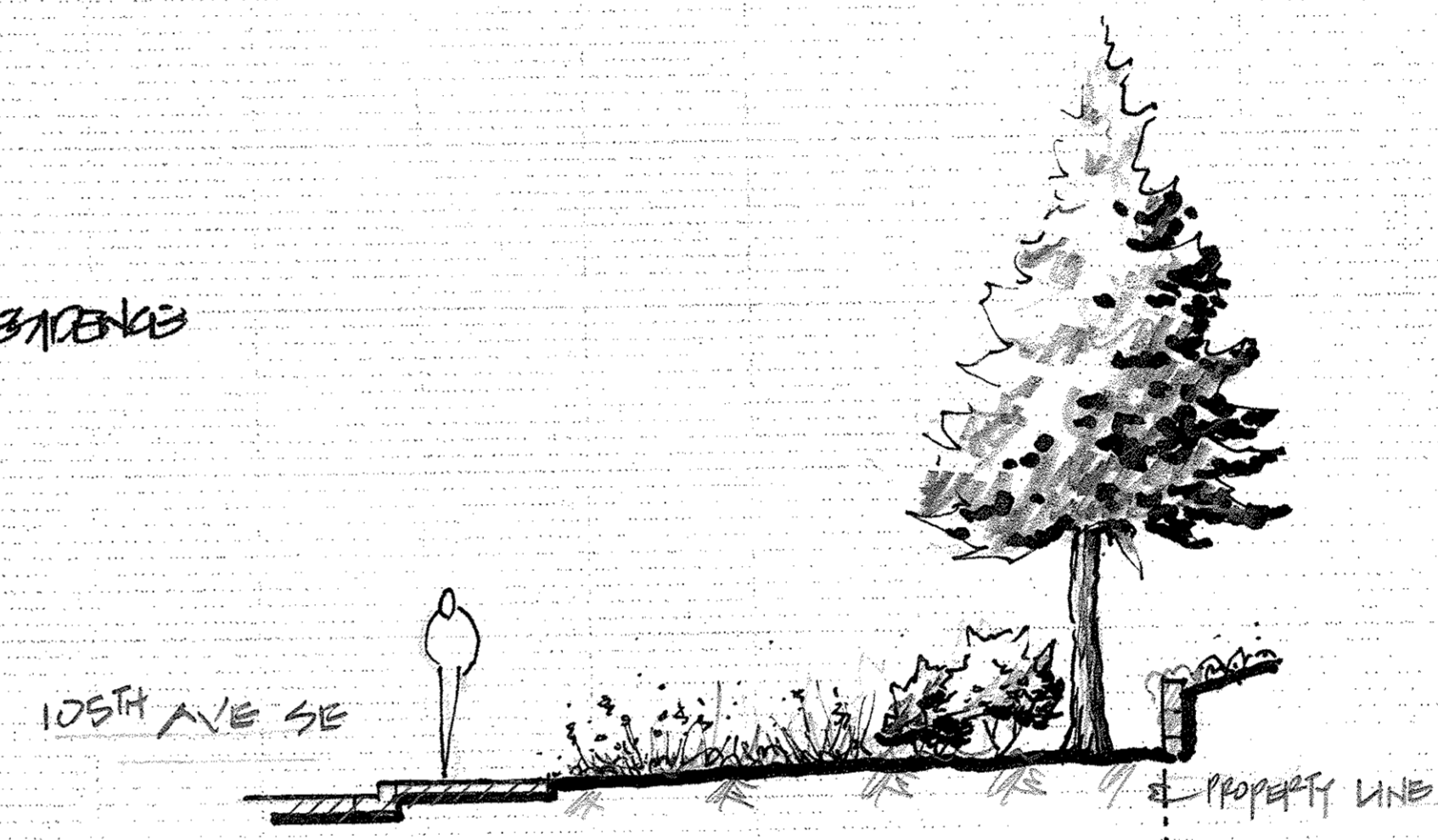
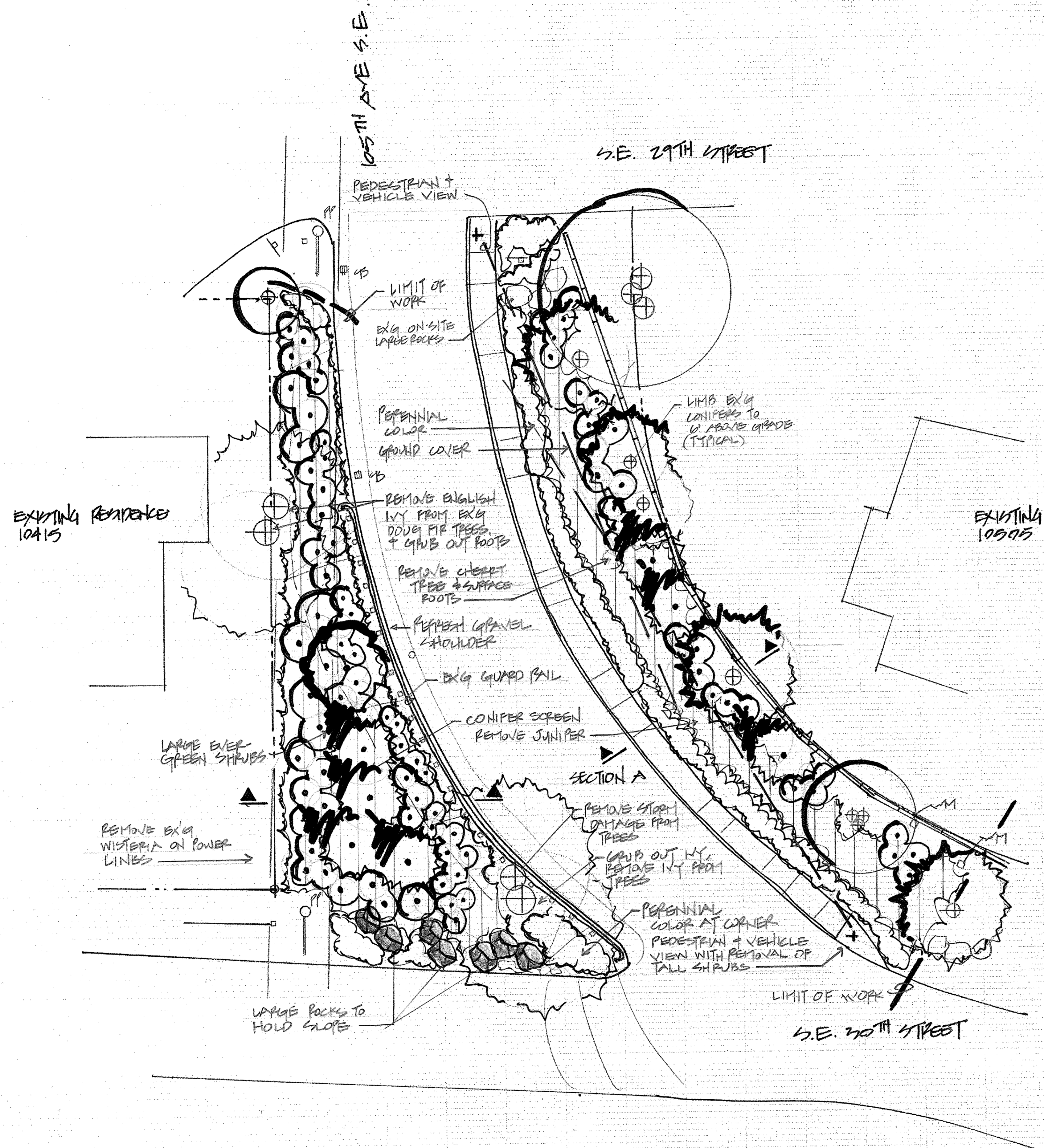


SCHEMATIC PLANT MATERIAL LEGEND

-  NATIVE CONIFER TREES - 6' height, B&B
 Hinok Cypress/*Chamaecyparis obtusa* "Hinok"
 Shore Pine/*Pinus contorta*
 Weeping Alaska Cedar/*Chamaecyparis nooktinensis*
-  NATIVE DECIDUOUS TREES - 1.5" caliper, B&B
 Serviceberry/*Amelanchier alnifolia*
 Hazelnut/*Corylus cornuta*
 Kousa Dogwood/*Cornus kousa*
-  LARGE NATIVE SHRUBS - 24" height, container
 Pacific Wax Myrtle/*Myrica californica*
 Strawberry Madrone/*Arbutus unedo*
 Red Flowering Currant/*Ribes sanguineum*
-  MEDIUM NATIVE SHRUBS - 18" height, container
 Oregon Grape/*Mahonia aquifolium*
 Evergreen Huckleberry/*Vaccinium ovatum*
 Nootka Rose/*Rosa nutkana*
-  GROUND COVERS - 1 gallon at 36" o.c.
 Kinnikinnick/*Arctostaphylos uva-ursi*
 Salal/*Gaultheria shallon*
-  GRASSES AND PERENNIAL COLOR - 1 gallon at 24" o.c.
 Daylily/*Hemerocallis sp.*
 Golden Japanese Forest Grass/*Hakonechloa macra* "All Gold"
 Frosty Curl Sedge/*Carex albula*
 Orange New Zealand Sedge/*Carex testacea*



BEAUX ARTS VILLAGE CORNER
 SE 30TH STREET AND 105TH AVENUE SE
 BEAUX ARTS, WASHINGTON 98004

DATE: 8/2/17
 JOB# 217158
 SCALE: 1"=10'-0"
 COPYRIGHT LRBA 2017

REVISED:
 SHEET #
 30-1

Lauchlin R. Bethune Associates, Inc.
 Landscape Architecture & Planning, ASLA
 www.lrbethuneassociates.com
 P.O. Box 1442
 Maple Valley, Washington 98038-1442

lauch@bethuneassociates.com
 phone: (425) 432-9877
 facsimile: (425) 432-9878